

OFFICIAL PROGRAMME



SCOTTISH LEAGUE CUP

CELTIC

versus

CLYDE

KICK-OFF — 3 p.m.

SEMI-FINAL
IBROX STADIUM
SATURDAY
SEPTEMBER 28th, 1957

Pen Pictures of Celtic

DICK BEATTIE—Goalkeeper. 5 ft. 11 in., 11 st. 2 lb. Was taken to Parkhead from Duntocher Hibs. in 1954. A keeper of outstanding ability.

JOHN DONNELLY—Right-back. 5 ft. 9 in., 11 st. Arrived from Armadale in 1955 as a centre-half, but has taken over Mike Haughney's berth and made it his own by his consistency and resource. Reveals commendable positional sense and endeavours to keep in touch with his colleagues immediately in front of him.

SEAN FALLON—Left-back. 5 ft. 8 in., 12 st. 6 lb. From Glenavon to Parkhead, March, 1950. Was centre-forward with Sligo Rovers before joining Glenavon, for whom his excellent form at back impressed Manager McGrory. Played for the Irish League against the League of Ireland. His performance in the game convinced Manager McGrory that he was on the right track.

WILLIAM FERNIE—Right-half. 5 ft. 7 in., 10 st. 10 lb. Brought from Kinglassie Colliery to Parkhead in 1949, his promise as a junior came to fruition and is now well established. Artistic ball worker who can go in and take a goal on his own. Worthily earned full International honours.

ROBERT EVANS—Right-half or centre-half. Born Glasgow. 5 ft. 6 in., 10 st. 10 lb. Sir John Stirling Maxwell School, Thornliebank Methodist, St. Anthony's, Celtic, 1944. One of the 1949 Wembley heroes. Got all the honours in 1949 and was never on the losing side. Helped to beat France at Hampden and toured America and Canada with the S.F.A. Honours—England 1949, 51, 54, 56; Wales 1949, 50, 54, 56; Ireland 1949, 50, 52, 54, 56; English League 1950, 51, 52, 53, 54, 55, 56; Irish League 1949, 50, 51, 54, 55, 56, 57; League of Ireland 1950, 53, 55, 56, 57, 58; France 1949, 50; Switzerland 1950; Portugal 1950, 55; Austria 1950, 55, 56; Sweden 1953; Norway 1954; Finland 1954; Yugoslavia 1955; Hungary 1955; South Africa 1956; Germany 1957; Spain 1957.

ROBERT PEACOCK—Left-half. 5 ft. 8 in., 10 st. 10 lb. Came from the Irish club Coleraine in 1949. Fast-moving, astute schemer, who knows the passes his forwards like to take on the run. Has been "capped" for Ireland against England and Scotland and for Great Britain against the Rest of Europe. Is the Celtic captain.

ERIC SMITH—Outside right. Demobbed on Thursday after 2 years National Service. He is brought in at Outside-right where he has played before but he is so versatile that he can perform in almost any position.

ROBERT COLLINS—Inside-right. Born Glasgow. 5 ft. 3 in., 10 st. Arrived at Parkhead from Pollok in 1949 and was straightaway brought into the first team against Rangers to prove himself as a lad who knows the value of getting the ball across

when his colleagues are placed to meet it. Honours—Wales 1950, 56, 57; Ireland 1950, 56; English League 1953, 55, 57; Irish League 1950, 52, 55, 56, 57; League of Ireland 1950, 52, 55, 56, 57, 58; Austria 1950, 55; Yugoslavia 1955; Hungary 1955; South Africa 1956; Spain 1957; Germany 1957.

BILLY McPHAIL—Centre-forward. 5 ft. 9½ in., 10 st. 7 lb. Was transferred from Clyde and became the recognised leader. Scored both of his team's goals against Clyde in last season's League Cup semi-final.

SAMMY WILSON—Inside-left. 5 ft. 8 in., 10 st. 10 lb. Was taken on a free transfer at the end of the season from St. Mirren, as a wing-half, and on getting his chance up front, accepted it with such alacrity and success that he has not only held it, but has brought praiseworthy command and punch to the line.

BERTIE AULD—Outside-left. 5 ft. 8 in., 10 st. 10 lb. From Maryhill Harp in 1955, he has grown into a thoroughly capable forward, enterprising and alert to a chance.

CHARLES TULLY—Outside-left. Born Belfast. 5 ft. 8 in., 10½ st. From Belfast Celtic to Parkhead June, 1948. Can hold the ball to advantage. An Irish League honour before joining Celtic, he has since collected six full "caps" for Ireland against Scotland, England and France.

Ask FOR 'PATZ'

THE WORLD'S FAVOURITE LAGER

The advertisement features a cartoon character on the left, wearing a hat and a white shirt with a 'Patz' logo on the chest. He has a long, thin neck and is pointing his right index finger upwards. To his right is a dark glass bottle of Patz Light Lager with a white label that reads 'Patz LIGHT PATZENHOPFER GERMAN LAGER'. Below the character and bottle is a banner with the word 'patz' in a stylized, lowercase font, followed by 'light LAGER' in a simpler font. At the bottom of the banner, it says 'Bottled in Scotland by JOSEPH DUNN LIMITED'.

Thumbnail Sketches of Clyde

MICHAEL WATSON—Goalkeeper. 5 ft. 10 in., 10 st. 6 lb. Arrived at Shawfield from St. Roch's in 1953. Executed several brilliant saves against Celtic in last season's League Cup/semi-final at Hampden and could be absolved from all blame in the 2-0 defeat.

ALBERT MURPHY—Right-back. 5 ft. 10 in., 12 st. Was chosen by the Eire League against the Scottish League in Dublin in 1949, and it was due to his impressive showing in that match he was signed from the Dublin Transport team. Returned to Eire for a spell, but came back confident he would make good, and on being drafted into the first team retained his position. Is a sound tackler who uses the ball intelligently. Likes to dribble into position to create a thrust from deep in defence, but does not leave his goal exposed.

HARRY HADDOCK—Left-back. 5 ft. 7½ in., 10 st. 9 lb. Was secured from Renfrew Juniors in 1949. Gave a magnificent display against Celtic last season. Sure in the tackle and kicks with accuracy and thought. Honours—England 1955; English League 1955; Irish League 1956, 57; League of Ireland 1955, 56, 57; Danish League 1956; Hungary, 1954, 55; Portugal and Yugoslavia 1955.

GEORGE WALTERS—Right-half. 5 ft. 10 in., 11 st. Was signed from Ferguson Memorial in 1956 as an inside-forward, but Manager Johnny Haddock sensed he would find greater scope for his talents if fielded at right-half. It was a wise decision for George developed into an assertive, profitable middleman. His mates need never look in vain if an extra effort is required in forcing home a thrust.

WILLIAM FINLAY—Centre-half. 5 ft. 11 in., 11 st. 9 lb. Transferred in 1956 from East Fife. A cool, studious pivot who brings a sound football brain to his task of subduing opposing centre and at the same time marshalling his own colleagues for an assault in the opposite direction. Was in no way to blame for the loss of the two goals scored by Billy McPhail, the ex-Clyde centre and now Celtic leader, in the League Cup semi-final last season.

MIKE CLINTON—Left-half. 5 ft. 10 in., 11 st. 3 lb. Went to Shawfield from Ashfield in 1954 as a centre-half. Is always ready and able to take up any position in the half-back line. Likes to move forward and bid for a goal on his own. Has operated at left-half as well as in the attack.

GEORGE HERD—Outside-right. 5 ft. 8 in., 10 st. 9 lb. Turned professional from Queen's Park at the end of last season. This dynamic winger has fully justified Clyde's decision to bring him from Hampden. His recent exhibitions, in fact, have surpassed those as an Amateur. Quick to strike and discloses splendid judgment in the cross or centre.

DAN CURRIE—Inside-right. 5 ft. 7 in., 10 st. 9 lb. From Duntocher Hibs in 1954, his promise as a Junior has come to fruition. His zest, skill and power have made him one of the most serviceable inside-forwards in the country. Doesn't shirk moving in alone for the "kill."

PAT (Bassie) KEOGH—Centre-forward. 6 ft., 13 st. Was secured from Maryhill in 1951 as a wing half-back. Now a centre the broad-shouldered leader makes good use of the ball and has become feared by defences by the manner in which he can take a chance with his head. Holds a telling understanding with his inside-forwards, while the wingers know how he likes the ball to come across to him.

ARCHIE ROBERTSON—Inside-left. 5 ft. 11 in., 11½ st. Was discovered in Schools' football and the promise disclosed then quickly ripened. Shows artistic ball control and carries a telling shot. Is playing better this season than perhaps ever before in his career at Shawfield which began in 1947 when he went there from Eastwood Academy. Honours—Portugal, Austria, Hungary, Irish League and League of Ireland in 1955.

TOMMY RING—Outside-left. 5 ft. 7½ in., 10½ st. A slick-moving, enterprising winger who can win a game on his own. Became a Clyde player from Ashfield in 1948, and became a favourite at Oatlands by his skilful manoeuvring and speed with which he executes his moves. Honours—England 1955, 57; Wales 1955; Ireland 1955; English League 1953, 57; Irish League 1954, 57; League of Ireland 1954, 55, 57, 58; Sweden 1953; Hungary 1954; Spain 1957 (twice); Switzerland 1957; Germany 1957.



**THE
IMPROVED 'T'
FOOTBALL
USED IN MORE
INTERNATIONAL
MATCHES THAN
ANY OTHER BALL**

SOLE MANUFACTURERS :

WM. THOMLINSON LTD.
450 DUMBARTON ROAD,
GLASGOW, W.I

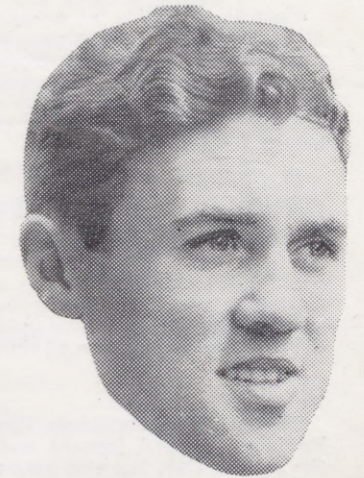
THE LINE-UP IN TODAY'S SCOTTISH LEAGUE CUP SEMI-FINAL AT IBROX

SOUTHERN LEAGUE CUP WINNERS

- 1940-41 Rangers 4, Hearts 2
(after draw 1-1).
- 1941-42 Rangers 1, Morton 0.
- 1942-43 Rangers 1 goal 11 corners,
Falkirk 1 goal 3 corners.
- 1943-44 Hibernian 6 corners,
Rangers 5 corners.
- 1944-45 Rangers 2, Motherwell 1.
- 1945-46 Aberdeen 3, Rangers 2.

SCOTTISH LEAGUE CUP WINNERS

- 1946-47 Rangers 4, Aberdeen 0.
- 1947-48 East Fife 4, Falkirk 1
(after a draw 1-1, after extra time).
- 1948-49 Rangers 2, Raith Rovers 0.
- 1949-50 East Fife 3, Dunfermline 0.
- 1950-51 Motherwell 3, Hibernian 0.
- 1951-52 Dundee 3, Rangers 2.
- 1952-53 Dundee 2, Kilmarnock 0.
- 1953-54 East Fife 3, Partick Thistle 2.
- 1954-55 Hearts 4, Motherwell 2.
- 1955-56 Aberdeen 2, St. Mirren 1.
- 1956-57 Celtic 3, Partick Thistle 0
(after a draw 0-0, after extra time).



BOBBY COLLINS

The ball used in this match is the Thomlinson Improved "T" ball. It is manufactured by Wm. Thomlinson, Ltd., Glasgow.

BEST REPORTS — ALL SPORTS

SCOTTISH DAILY MAIL



TOM RING



HARRY HADDOCK

"His Lordship's Larder"

for

GOOD FOOD • GOOD WINE
GOOD FELLOWSHIP

4 ST. ENOCH PLACE
(Opposite St. Enoch Station)

GLASGOW

Table Reservation - - CENTRAL 4344

Drybrough's

Stout
SWEET AND
NOURISHING

EVENING
CITIZEN

ALL the NEWS
the VIEWS
the RESULTS
FIRST!

... and of course the
Best Reports

It has been a Worthwhile Tournament

ALTHOUGH we hear, from time to time, suggestions relating to the best time for the playing of the Scottish League Cup, the irrefutable fact is that the success of the tournament in its present form is the answer to all criticism. It has shown itself a most worthwhile competition.

Since its inception as a war-time attraction in 1940-41, it has, in every way, been an unqualified success. The system of dividing the First and Second Division clubs into sections, and playing for points to reach the knock-out ties, not only ensures splendid sport, but proves a financial benefit for the clubs.

It should be clearly understood that though the present trophy is different from the original one, the tournament started in 1940 is the one in which the teams are competing today. The Cup competed for from season 1940-41 to 1945-46 was a temporary gift by the S.F.A. They requested its return and put it up as the Victory Cup, and as such, it was won by Rangers, who defeated Hibernian in the final, and retain it for all time.

Gifted Present Cup

The late John McMahon, then Scottish League President, stepped forward and graciously gifted the present Cup, knowing that so popular a competition must be continued. The former Clyde Chairman never saw a fond dream realised in the trophy being borne in triumph to Shawfield, but they are now in today's semi-final against Celtic buoyed by a great hope and ambition.

█ Celtic, on the other hand, are just as determined

to retain the prize they won for the first time last season and so like its look they feel it would be a shame to see it go!

Rangers and Brechin City, of course, have other thoughts. Gallant wee Brechin are in the semi-final for the first time, and with the "gates" pooled, will receive a rich reward, but Rangers are record winners, having prevailed six times in the 17 seasons of its existence and competed in nine finals.

Note this:

We would point out that if it is a draw at the end of 90 minutes today, an extra half-hour will be played, and if still drawn, the replay will take place in mid-week.

Last season's finalists were Celtic, who beat Clyde 2-0 in the semi-final before a 36,697 crowd at Hampden—Billy McPhail recorded both goals against his former club—and Partick Thistle who got through their semi-final tie 3-2 against Dundee after a 0-0 draw at Ibrox.

It needed two games to separate them. The first was drawn 0-0 (after extra time) and in the replay, Celtic took the trophy to Parkhead with a 3-0 victory.

Details of the final, due on Saturday, October 19, will be published in the Press.



THE
Best
IN
Sport
EVERY NIGHT!

EVENING
TIMES

FOR YOUR PLEASURE!
During the match . . .
CHOCOLATES & SWEETS
by

R. S. McColl

. . . and afterwards a visit to the
SELF-SERVICE
CAFETERIA
17 RENFIELD STREET
(Near Central Station)
OPEN FROM 8 a.m. UNTIL 10.45 p.m.

HALF-TIME SCORE BOARD

A RANGERS BRECHIN CITY			H ASTON VILLA LEICESTER CITY
B EAST FIFE QUEEN'S PARK			I BOLTON WANDERERS PORTSMOUTH
C HIBERNIAN AIRDRIE			J BURNLEY NEWCASTLE UNITED
D QUEEN OF THE SOUTH RAITH ROVERS			K EVERTON BLACKPOOL
E ST. MIRREN ABERDEEN			L MANCHESTER CITY TOTTENHAM H.
F NOTTS FOREST WEST BROMWICH A.			M PRESTON NORTH END CHELSEA
G ARSENAL LEEDS UNITED			N WOLVERHAMPTON W. MANCHESTER UTD.

FROM
STOP WATCHES £6 5/-

15 JEWEL WRIST
WATCHES £5

GOLD
CUFF LINKS £4 15/-

PEWTER
TEASETS £5 15/-

GOLD
SIGNET RINGS £3 10/-

DIAMOND
RINGS £10

6 CRYSTAL
WINE GLASSES £2 15/-

T. S. CUTHBERT

H. STAINTON CROSTHWAITE

TROPHIES

MEDALS and PRIZES

DESIGNS and ESTIMATES

PREPARED FREE

OF CHARGE

GOLD NOT REQUESTED

FOR ORDERS PLACED

48 BUCHANAN STREET
7 PRINCES SQUARE, GLASGOW, C.I

Tel. CENTral 3717

REPAIRS AND ENGRAVING AT MODERATE CHARGES



WEAR WHILE YOU PAY

LUXURY PILE
OVERCOATS Ulster, S.B. Box and many other new styles from **£6 19 6**

CROMBIES Heavy satin lined from **19 GNS.**

TAILORED
RAINCOATS Coverts, Gaberdines & Cavalry Twill. Satin lined S.B. Box, D.B. and military styles from **£6 19 6**

SUITS TO MEASURE & READY TO WEAR
New Autumn
designs and materials including 'ACRILAN' and 'TERYLENE' from **£6 19 6**

Huge variety of new season's
SHOES, TIES, SHIRTS, SOX, KNITWEAR, SCARVES, etc.

FIRE AT SELLYNS QUEEN STREET

Owing to the destruction by fire of Sellyns Queen Street branch, all this Branch's business will be transacted from their warehouse at 71 Queen Street.

BARGAINS FOR WOMEN

**FUR COATS - COATS & SWAGGERS
RAINWEAR - DRESSES - JUMPER SUITS
BLOUSES - NYLONS - LINGERIE - etc.**

SELLYNS

458 DUMBARTON RD

**31 QUEEN ST.
20 SALTMARKET.
555 SPRINGBURN RD.
565 LONDON RD.**