

KILMARNOCK FC

SEASON 2009/10 / ISSUE 18 / £2.50



v CELTIC

CLYDESDALE BANK SCOTTISH PREMIER LEAGUE
TUESDAY 2ND FEBRUARY 2010 / KICK-OFF 7.30PM

MATCH SPONSOR **SMALLWORLD**



Give your plans the green light.

Our personal loans help get you on the road.



always thinking

Ask in branch
Call 0800 22 24 26
Visit www.cbonline.co.uk



Terms and conditions apply; speak to a member of staff for details. Applicants must be 18 or over and resident in the UK. All credit facilities are subject to status and for Personal Loans the rate and term at which we lend will reflect our assessment of your personal circumstances, your chosen loan amount and the loan purpose. Clydesdale Bank PLC is authorised and regulated by the Financial Services Authority, No. 121873. Credit facilities other than regulated mortgages are not regulated by the Financial Services Authority. Clydesdale Bank PLC. Registered in Scotland (No. SC001111). Registered Office: 30 St. Vincent Place, Glasgow G1 2HL.

C8824 EXP FEB 10



HONOURS

Scottish League

Division 1 Champions: 1964/65

Runners-up:

1959/60, 1960/61, 1962/63, 1963/64

New Division 1 Runners-up:

1975/76, 1978/79, 1981/82, 1992/93

Division 2 Champions:

1897/98, 1898/99

"B" Division Runners-up:

1953/54

(Old) Division 2 Runners-up:

1973/74

(New) Division 2 Runners-up:

1989/90

Scottish Cup Winners:

1920, 1929, 1997

Scottish Cup Runners-up:

1898, 1932, 1938, 1957, 1960

League Cup Runners-up:

1952/53, 1960/61, 1962/63, 2000/01, 2006/07

Scottish Qualifying Cup Winners:

1896/97

Ayrshire FA Challenge Cup Winners:

42 times

European Cup Entrants:

1965/66

Cup Winners Cup Entrants:

1997/98

Fairs Cup/UEFA Cup Entrants:

1964/65, 1966/67 (Semi-Finalists), 1969/70,

1970/71, 1998/99, 1999/2000, 2001/02

New York International Tourney

Runners-up: 1960

Club Directory

Chairman: Michael Johnston

Honorary President: Sir John Orr, OBE

Manager: Jimmy Calderwood

Assistant Manager: Jimmy Nicholl

First Team Coach: Sandy Clark

Youth Development Coach: Alan Robertson

Community Coach: Paul McDonald

Matchday Host: Ray Montgomerie

Doctors: Mr Ivan Brenkel, Mr Brian Syme

Physio: Alex MacQueen

Masseur: Phil Turner

Commercial: Anne Clark

Club Secretary: Kirsten Callaghan

Facilities Manager: Mark Gallagher

Park Hotel: (01563) 545999

Killie Club: (01563) 545313

Club Shop: Rugby Park (01563) 545310

Official Match Programme

Season 2009/10

Editor: Richard Cairns

Contributors/Photographers:

John Livingston, Ross MacKenzie,

Sandy Ferguson

Printed by:

Fasprint Services (Irvine) Ltd

3 Ailsa Road, Irvine KA12 8LL (01294) 311100

The views expressed in this programme

are not necessarily the views and

policies of Kilmarnock FC

RUGBY PARK, RUGBY ROAD

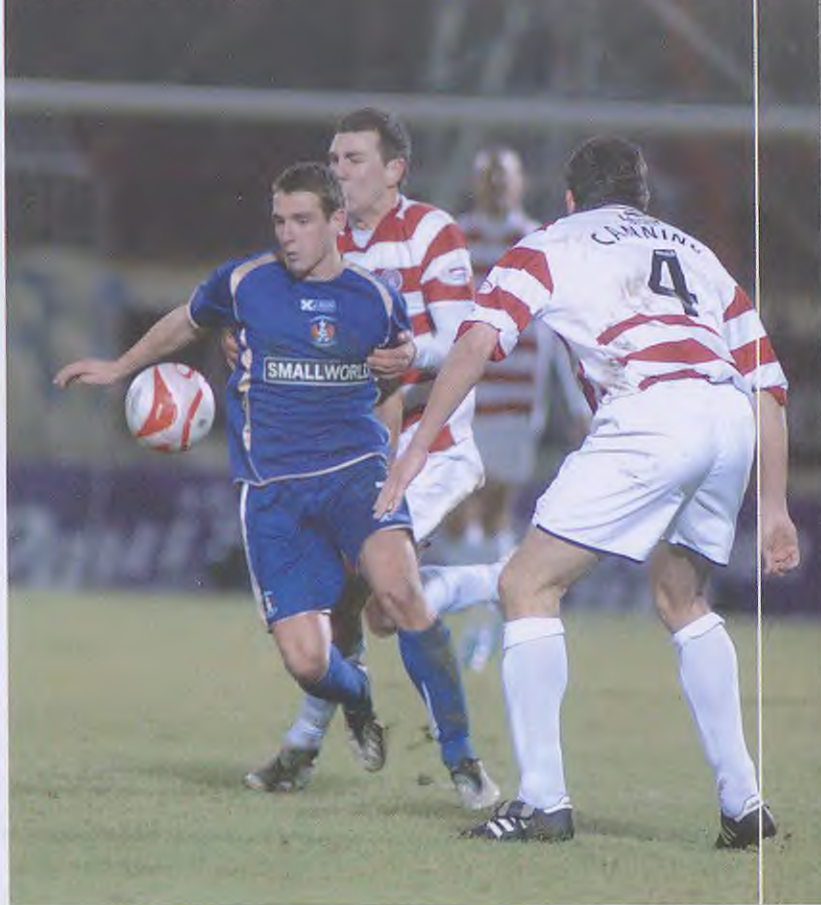
KILMARNOCK KA1 2DP

Tel: (01563) 545300

Fax: (01563) 522181

Capacity 18,128 (all seated)

www.kilmarnockfc.co.uk



A Good Start

What do you call a point from a goalless draw at New Douglas Park? A good start. Killie had lost to Motherwell and Aberdeen in the SPL since the quickfire departure of Jim Jefferies and Billy Brown and the arrival of Jimmy Calderwood and Jimmy Nichol, so this was a welcome first point.

Overall, though, it was a pretty uninspired ninety minutes, with Killie making marginally the better of it

against an Accies side who rarely threatened Cammy Bell's goal. The lack of goals is still worrying though, but we are getting into good positions before wasting the final pass or cross into the box. Perhaps it's only a shortage of confidence amongst the squad at the moment - something that the new management team have been working hard to rectify. Nothing that a couple of good results won't turn round!

IN TODAY'S ISSUE . . .

Page 17 . . . We look forward to Inverness Caledonian Thistle's visit here in Scottish Cup action on Saturday.

Page 21 . . . "Strange But True" - Ten things you might not know about Celtic.



When you know the
opposition are pure mince



Get stuck into a Killie Pie

"Say Aye to a Killie Pie"



Established Since
1945
BROWNING'S
THE BAKERS



QUALITY PRODUCTS FROM QUALITY PEOPLE
SPONSORS OF THE YOUNG KILLIE

RETAIL BRANCHES AT: DEAN STREET, KILMARNOCK, KING STREET, KILMARNOCK, SHORT STOP, KILMARNOCK, MAIN STREET, NEWMILNS,
CROSS STREET, GALSTON, HIGH STREET, STEWARTON, HIGH STREET, IRVINE, BRIDGEGATE, IRVINE, PORTLAND STREET, TROON
AND AT THE HEAD OFFICE: BLOCK 1 BONNYTON INDUSTRIAL ESTATE, KILMARNOCK, AYRSHIRE KA1 2NP TEL: 01563 522685 FAX: 01563 525888
WWW.KILLIEPIE.COM

ALL KIOSKS WILL CLOSE 15 MINUTES AFTER THE START OF THE SECOND HALF

Confidence and Self Belief



Last Tuesday's game at Hamilton wasn't a great one for the fans, but I think we can take some positive things from the performance. Defensively we played well, and we never really looked like losing a goal. Manuel Pascali had a great game in the heart of the defence, and showed that the captain's armband fits him well. Unfortunately we lost Mark Burchill not long after he missed a good chance to put us ahead, but young Liam Kelly came in and showed a maturity beyond his years, putting in some great passes.

Liam caught our eye in training, and I had no hesitation in bringing him in to the team when I had to. Once again it was the final pass that let us down. There wasn't enough movement off the ball when we were attacking, but that's something we can work on in training.

The games are coming thick and fast at the moment and they don't come much bigger than the visit of Celtic tonight. When I was at Dunfermline and Aberdeen I used to relish the challenge brought by facing the Old Firm, especially at home and I want the players to feel the same way. Confidence and self-belief go a long way in football and at the moment some of the Killie players seem to lack a bit of that, preferring to play the safe ball rather than try something out of the ordinary. That will change over the next few months - it has to. Jimmy, Sandy and I feel we have the basis of a good squad of players here - all we have to do is bring out their potential!

Jimmy Calderwood



Wheatsheaf Inn

Main Street, Symington, Ayrshire
T: 01563 830307 F: 01563 830307
www.thewheatsheafsymington.co.uk

BURNS MALL LINE-UP

- AT HOME WE'RE HARD TO BEAT!



Welcome to Celtic

Welcome to this evening's SPL match against Celtic. Unfortunately the match had to be postponed on police advice on it's original scheduled date of 30th December, due to the dangerous condition of the surrounding roads, then again on Wednesday 20th January due to the re-arrangement of our Scottish Cup tie against Falkirk.

Hopefully nothing will prevent the match going ahead tonight at the third time of asking!

This will be Killie's first match against Celtic under the new management team of Jimmy Calderwood, Jimmy Nicholl and Sandy Clark, who'll be looking to improve on the record of their predecessors, who managed two draws (and twenty-five defeats) in twenty-seven meetings between the two Clubs in League and Cups.



Liam Kelly Killie Debut v Hamilton

LIAM KELLY

Midfielder Liam Kelly, who turns 20 on Wednesday 10th February, became the first Killie youngster to be introduced to the first team by new manager Jimmy Calderwood at New Douglas Park last Tuesday.

Born in Milton Keynes, Liam signed from the MK Dons in 2008, and had become a weekly fixture on the KFC substitute bench thanks to the "Under 21 rule". His patience was rewarded with his SPL debut against Hamilton Accies, however, when he came on for the injured Mark Burchill and played well.



Consistent central defender Frazer Wright will be out for some six weeks after undergoing an operation on an ankle injury.

He's joined in Alex MacQueen's treatment room by Allan Russell, who had to go off against Aberdeen at Pittodrie.

PROUD TO SERVE AYRSHIRE

5 Franchises to choose from with access
to over 1,000 used cars at parks.uk.com

Park's Heathfield Road



Park's High Road



Park's Irvine



RENAULT High Road, Ayr, Tel: 01292 613000

NISSAN High Road, Ayr, Tel: 01292 653150

RENAULT Newmoor Roundabout, Irvine, Tel: 01294 221166

LAND ROVER 100 Heathfield Road, Ayr, Tel: 01292 653200

JAGUAR 100 Heathfield Road, Ayr, Tel: 01292 653000

VOLVO 100 Heathfield Road, Ayr, Tel: 01292 653100

MOTORWORLD 100 Heathfield Road, Ayr, Tel: 01292 653070

PARK'S MOTOR GROUP
Scotland's Driving Force



Celtic

The visiting club to Kilmarnock for this evening's Clydesdale Bank Scottish Premier League fixture is Celtic F.C. We warmly welcome the directors, management, players and supporters of Celtic to Rugby Park, and hope they will enjoy with us an entertaining encounter between our respective teams.

This game was postponed on Wednesday December 30th at the height of the worst spell of winter weather in the town of Kilmarnock, and all of Scotland, for almost 30 years. To the credit of the Rugby Park ground staff and personnel, the playing surface was playable, but the Police were concerned that the areas around the stadium, such as the approach roads, pavements and walkways were far too dangerous for the public. The fact that it was an evening game as well, did not help matters, as the temperatures were much lower, and the visibility aspect for people walking to and from the stadium on pavement areas not treated, made it an even wiser decision. Indeed, anyone who actually saw the conditions of the route to and from the travelling fans parking areas, just under a mile away, will testify that the state of the pavements they would have had to try and walk on to the stadium were horrendous, and that the decision taken by the Police was definitely a correct one.

It was all the more disappointing that the game was postponed, because it had been scheduled to be shown live on television by ESPN. Fortunately, the company has decided to still broadcast it on its re-arranged date this evening, thus we extend a warm welcome to Rugby Park to the ESPN broadcasting team on duty, and hope they enjoy their visit to Kilmarnock F.C.

The January transfer window, which closed at midnight last night, saw Celtic have quite a busy time, and their manager Tony Mowbray has initiated a good number of "ins and outs" with his squad from the time it was open until this article was written with less than 4 days to go until it closed. At the time of writing this article, Gary Caldwell (Wigan Athletic), Barry Robson, Willo Flood and Chris Killen (all Middlesbrough) had all definitely left the club, whilst there was a possibility that Danny Fox would be sold to Burnley, and that captain Stephen McManus had been linked with a possible loan move to Middlesbrough. New faces to arrive included Ki Sung-Yeung (FC Seoul), Jos Hooiveld (AIK Stockholm), Thomas Rogné (Stabaek) and Morten Rasmussen (Brøndby IF). A couple of "old faces" returned to the club, in the shape of Darren O'Dea and Mark Brown, who both were back after having successful loan spells at Reading and Kilmarnock respectively.

Celtic may well have fallen behind Rangers at the top of the S.P.L, but they are far from out of the race for the title. They will be arriving at Rugby Park this