

OFFICIAL PROGRAMME

1s

Scottish

CUP FINAL



RANGERS (HOLDERS) **v** **CELTIC**
HAMPDEN PARK, MAY 4, 1963

KICK-OFF
3 P.M.



Pen-Pictures of the Celtic Players who

Aim to Win Trophy for the 18th Time



FRANK HAFHEY

FRANK HAFHEY—Goalkeeper—6 ft., 11 st., 6 lb. Signed from Maryhill Harp in 1958, and on being entrusted with the first team berth, grabbed it as securely as he does the ball. Equally effective with high and low shots, and reveals commendable anticipation.

DUNCAN MCKAY—Right-back—5 ft. 9 in., 11 st., 1 lb. Scored twice from the penalty spot in the semi-final against Raith Rovers at Ibrox Park. From Maryhill Harp in 1955.



BILLY McNEILL
Celtic Captain

Holds international honours. A fast, thoughtful back who likes to advance behind his half-back, and when the occasion allows it, crosses into the opponents' half of the field. Never gives up, no matter how elusive a winger may be.

JAMES KENNEDY—Left-back—5 ft. 10 in., 11 st., 3 lb. Arrived at Parkhead from Duntocher Hibs in 1955, and on taking over the berth from Neil Mochan, who led Dundee United against Rangers in the semi-final at this venue, established himself as one of the most reliable defenders in the country.



DUNCAN MACKAY

WILLIE O'NEIL—Left-back—5 ft. 9 ins., 11 st., 4 lb. Was signed from St. Anthony's in 1959. Discloses brilliant positioning sense.

JOHN McNAMEE—Right-half—5 ft. 11 in., 12 st., 4 lb. Was signed by Manager James McGrory as a centre-half in 1959, being discovered with Bellshill Athletic. When Pat Crerand was transferred to Manchester United, he came into the first team as a regular and has shown the wisdom of that appointment. A forceful, agile middleman, who can jump forward and underline his ability as a marksman.



JOHN McNAMEE

WILLIAM McNEILL—Centre-half—6 ft., 1 in., 11 st., 2 lb. Arrived at Parkhead from Blantyre Victoria in 1957, as a centre-half, and has occupied that position with conspicuous success both for Celtic and Scotland. Can also play at right-half, but it is as a pivot that he is known best. Gave an impeccable display against St. Mirren in the quarter-final tie at Love Street and again against Raith Rovers in the semi-final.

BILLY PRICE—Left-half—6 ft. 1 in., 13 st., 7 lb. Went to Falkirk and then journeyed to Parkhead last year. A strong, forceful half-back who has fitted into Celtic's pattern and his consistency suggests he will hold the first-team berth. Strong and accurate in the tackle, and thoughtful in distribution.



JOHN DIVERS

STEVE CHALMERS—Outside-right—5 ft., 9 in., 10 st., 12 lb. Scored one and "made" another of Celtic's five goals against Raith

Rovers in the semi-final. Came to Celtic from Ashfield in 1959 as an inside-forward, but appeared in the Parkhead line-up in more than one position. On taking over the outside-right position, proved himself one of the game's most prolific opportunists.

JIM JOHNSTONE—Outside-right—5 ft., 4 in., 9 st., 8 lbs. He's wee, but he's good! Superb ball player, who can exploit a defender's weakness to the full—and take a goal with confidence and coolness.

BOBBY MURDOCH—Inside-right—5 ft., 9 in., 11 st. One of the most outstanding prospects to hit the football scene for years. The 17-year-old inside-forward was discovered in Motherwell schools' football in 1959, and such has been his swift development, he has become a regular first-team player.

JOHN HUGHES—Centre-forward—6 ft., 12 st., 4 lb. From Shotts Bon Accord in 1959. Went off in the tie against St. Mirren, at Love Street, with a pulled muscle. The big, tricky Celtic leader has emphasised his power and judgment more than once. Can snap a goal with head or foot.

JOHN DIVERS—Inside-left—5 ft., 10 in., 10 st., 8 lb. Lifted Celtic into the lead against Raith Rovers in the semi-final at Ibrox, when deputising for the injured Hughes at centre-forward. Has scored many goals by his sudden incursions and on-the-mark shooting. Joined the club in 1957.

FRANK BROGAN—Outside-left—5 ft., 9½ in., 10 st., 6 lb. Was found while playing with St. Roch's in 1960, and it was obvious Manager McGrory had unearthed another promising lad. That promise has come to fulfilment and he has justified the praise lavished on his first team displays.

How They Got Here

RANGERS

AIRDRIE (Away) ...	6-0
EAST STIRLING (Home) ...	7-2
DUNDEE (Away) ...	1-1
" (Home) ...	3-2
DUNDEE UNITED (Hampden) ...	5-2

22-7

Scorers—Brand 9, Millar 4, Wilson 4, McLean 2, Henderson, Thomson (o.g.), Hamilton (o.g.).

CELTIC

FALKIRK (Away) ...	2-0
HEARTS (Home) ...	3-1
GALA FAIRYDEAN (Home) ...	6-0
ST. MIRREN (Away) ...	1-0
RAITH ROVERS (Ibrox) ...	5-2

17-3

Scorers—Hughes 4, Murdoch 4, MacKay 2, Divers 2, Brogan 2, Gallagher, Chalmers, McNamee.



THE IMPROVED 'T' FOOTBALL

USED IN MORE INTERNATIONAL MATCHES THAN ANY OTHER BALL

SOLE MANUFACTURERS

WM. THOMLINSON LTD.
450 DUMBARTON ROAD
GLASGOW, W.1



MARTELL

THREE STAR • MEDALLION V.S.O.P. • CORDON BLEU

Introducing the Ibrox Men who are



BILLY RITCHIE

BILLY RITCHIE—Goalkeeper—5 ft. 11 in., 13 st. Born Newtongrange. Executed a brilliant save from Dennis Gillespie in the first bluish of the semi-final at Hampden. Arrived at Ibrox from Bathgate Thistle in 1954. Shows brilliant anticipation. In Rangers' European Cup sorties he was acclaimed by the Continentals as amongst the most brilliant 'keepers they had seen.



BOBBY SHEARER
Rangers' Captain

BOBBY SHEARER—Right-back—Born Hamilton. 5 ft. 7 in., 11 st. Is Rangers' captain. Was transferred from Hamilton Academicals in 1955 and played his part in adding to Rangers honours' list. A lion-hearted, determined defender who never gives up. He is one of the greatest clubmen Rangers have had. Owns a fleet of buses.

DAVID PROVAN—Left-back—6 ft. 0½ in., 10 st. 10 lb. Graduated from the Reserves to take over from the injured Eric Caldow. His first appointment was against Hibernian, in the League Championship match, and was then fielded against Dundee United in the semi-final at Hampden Park.



JIM BAXTER

JOHN GREIG—Right-half—5 ft. 10 in., 10 st. 8 lb. Born Edinburgh. Came into the right-half position this season, and has retained the berth. During last close season's tour of Russia, he was among Rangers' most consistent players—at left-half, in which position he deputised for Jim Baxter, then still in the Army. A bold, uncompromising middleman with a strong-rifle-sure shot. Can also exploit the chance of snatching a goal.

Bidding to Retain the Scottish Cup



JIMMY MILLAR

RONNIE MCKINNON—Centre-half—5 ft. 11 in., 11 st. Born Glasgow. Was signed in 1958 from Dunipace Juniors as a left-half, but has occupied more than one berth, and promises to become a first-class centre-half as well as a wing-half man. He can meet the most difficult ball with either foot and direct it with confidence. If not so confident in going up to head a ball, he generally overcomes this uncertainty by his skilful positioning. Gave a grand display in the semi-final.

JAMES BAXTER—Left-half—5 ft. 10½ in., 11 st. Scored both Scotland's goals in the International at Wembley last month. Born Hill O' Beath. Was transferred from Raith Rovers in June, 1960, and made his debut at inside-left. Was one of the most effective and rhythmic moving half-backs in the country when Rangers were first attracted to him, and is showing his worth to the full in their colours. Is one of the real ball artists in British football and "reads" the game with gifted football intelligence.

WILLIAM HENDERSON—Outside-right—5 ft. 4½ in., 10 st. 2 lb. Born Baillieston. Won over the position from Alex. Scott, now with Everton, and saw a fond dream come true when "capped" against England at Wembley last month, when he was acclaimed by the Scots fans, particularly in the second-half. Is one of the most elusive and penetrating wingers in the country. His darting thrusts can bring confusion to any defence.



WILLIE HENDERSON

GEORGE McLEAN—Inside-right—6 ft., 11 st. Born Paisley. Netted one of Rangers' five goals against Dundee United in the semi-final with a fierce shot from over 20 yards. Transferred from St. Mirren this season. Was signed by St. Mirren as a centre-forward from Drumchapel Amateurs in 1959, but went first to right-half, and now to inside-right. A strong, forceful player with a tempestuous shot. Was first noticed playing in Boys' Brigade football.

JAMES MILLAR—Centre-forward—Born Edinburgh. 5 ft. 6 in., 10 st. 10 lb. His semi-final hat-trick again underlined his opportunism and intelligence. Joined Rangers from Dunfermline Athletic in 1955. A versatile performer who has operated in the half-back line and inside-right positions, but has gained his own niche in Rangers' history as a centre-forward. He leads the Scotland attack against Austria at Hampden Park, next Wednesday.

RALPH BRAND—Inside-left—Born Edinburgh. 5 ft. 7 in., 10 st. Rangers' leading marksman in the Cup. It was in 1952 that



RALPH BRAND



GEORGE McLEAN

Ralph became a Ranger from Garricknowe School. A natural footballer, he has appeared in several positions with conspicuous success. His ball control and feinting at speed can bring a fatal uncertainty to any opposition, while he has netted many spectacular and match-winning goals. Got another in the semi-final.

DAVID WILSON—Outside-left—Born Glasgow. 5 ft. 6 in., 10 st. 8 lb. It was in May, 1956, when this quick-thinking winger arrived at Ibrox as one of the most promising youngsters in the game. Such is his talent that he has won the outside-left berth for Scotland as his own. Has also been played at inside-left and earned the admiration of all by his exhibition at left-back against England after his club-mate Eric Caldow was carried off injured. Scored six goals from the centre-forward berth against Falkirk in the League Championship last season—three with his left and three with his right foot.

ROCKIES

have the best type filter tip, together with the best tobacco. The tip ensures a cool fresh filtered smoke, and does not interfere with the real tobacco flavour.

The more you smoke . . .

The more you'll like Rockies

3/10 for 20 AT YOUR CO-OP



The Final Sum-Up

Here is a summation of wins and losses between Celtic and Rangers in the major competitions:—

	wins	wins
The League	RANGERS 56	CELTIC 34
Scottish Cup	RANGERS 7	CELTIC 11
Glasgow Cup	RANGERS 30	CELTIC 20
Glasgow Charity Cup	RANGERS 20	CELTIC 11
Regional League	RANGERS 1	CELTIC 0
Southern League	RANGERS 7	CELTIC 3
Scottish League Cup	RANGERS 10	CELTIC 7
Victory Cup	RANGERS 1	CELTIC 0
Summer Cup	RANGERS 2	CELTIC 0
Total	134	86

T. S. CUTHBERT

(STAINTON CROSTHWAITE)

Watchmaker - Jeweller
Silversmith

JEWELLERS TO:

Scottish Football League
Scottish Badminton Union
Scottish Amateur Athletic Assoc.
National Cross-Country Union
Cowal Highland Gathering

All Types of Jewellery, Silver,
Watch and Clock Repairs carried
out at minimum cost

48 BUCHANAN STREET

7 PRINCES SQUARE, GLASGOW, C.1
(Opposite Herald Office)

Tel.: CEN 4359 and CEN 3717

Here are the Teams for To-day's Scottish Cup Final at Hampden Park

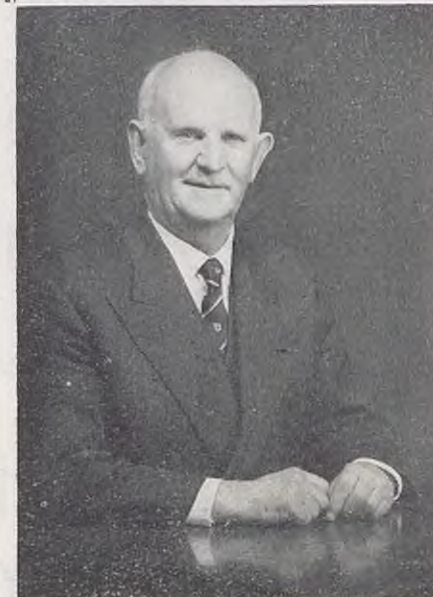
CELTIC CHAIRMAN



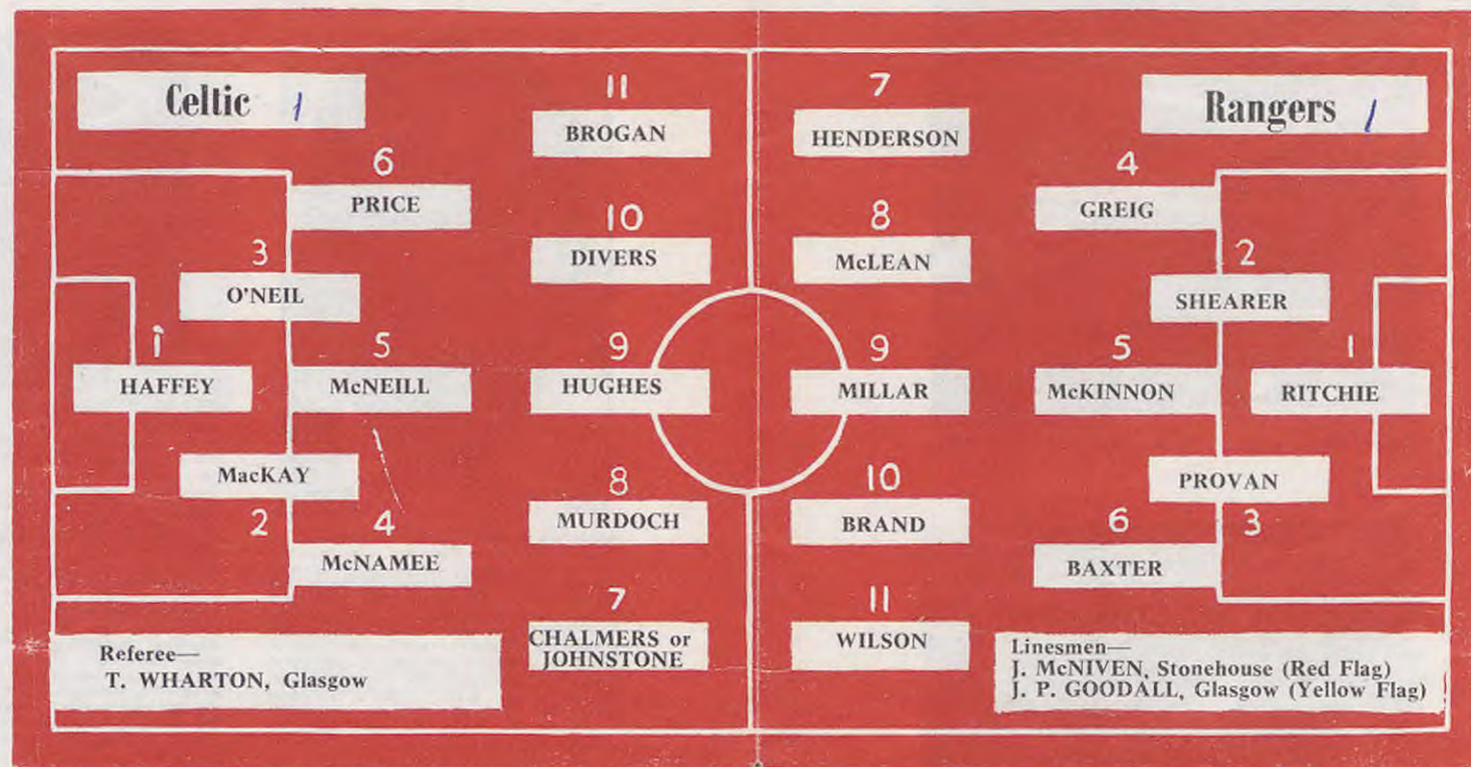
ROBERT KELLY

The Scottish Football Association President and Celtic Chairman

RANGERS CHAIRMAN



JOHN LAWRENCE



How you will be Entertained this Afternoon

- Event 1** 1.50—2.05 p.m.
COMBINED MILITARY AND PIPE BANDS OF THE 1st BATT. THE GLASGOW HIGHLANDERS (H.L.I.) T.A. By kind permission of Lt.-Col. J. Gunn, M.C., G.D. Bandmaster—W.O.1 Clifford Smith. Pipe-Major—J. Copeland. Drum-Major—A. Caven.
- Event 2—CYCLE RACE** 2.05—2.15 p.m.
Eight-minute Race, "De'il Tak' the Hindmost" by ten riders from the Scottish Cyclists' Union.
- Event 3** 2.15—2.25 p.m.
GYMNASTICS DISPLAY AND BATTLE PHYSICAL TRAINING
By Staff and Recruits from the Depot of the Royal Highland Fusiliers and Cameronians at Lanark. By kind permission of the Commanding Officer.
- Event 4—INVITATION MILE** 2.25—2.35 p.m.
Invitation Mile Race run under S.A.A.A. Rules.

- Event 5—SCHOOLS RELAY RACES** 2.35—2.45 p.m.
Boys—4 x 110 yards Relay by pupils of Dalziel High School; Coatbridge High School; High School of Glasgow; Hutcheson Boys' Grammar School.
Girls—4 x 110 yards Relay by pupils of Clydebank High School; Eastwood Secondary School; Westbourne Gardens Girls' School; Paisley Grammar School.
- Event 6** 2.45—2.50 p.m.
COMBINED MILITARY AND PIPE BANDS OF THE 1st BATT. THE GLASGOW HIGHLANDERS (H.L.I.) T.A.
- Event 7** 2.50—3.00 p.m.
TEAMS ON NATIONAL ANTHEM
Military Band will form up on track. National Anthem will be played after the captains have tossed and players are in position for the kick-off.

HALF-TIME

Bands will play for approximately 10 minutes from 3.45—3.55 p.m.

IF THE FINAL IS DRAWN

In the event of to-day's final being drawn at the end of 90 minutes, there will be no extra time. The replay will take place on Wednesday, May 15, again at Hampden Park with a 7.30 p.m. kick-off. If still drawn at the end of 90 minutes on that evening, an extra half-hour will be played.

CELTIC MANAGER



JAMES McGRORY

who was one of the most dynamic centre-forwards in Britain when a Celtic player.

RANGERS MANAGER



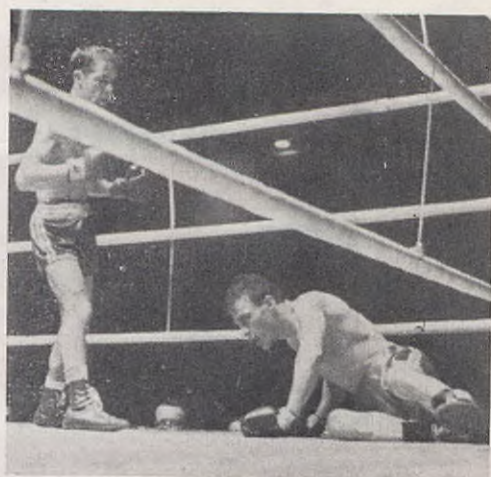
SCOT SYMON,

former half-back, who gave Rangers yeoman service as a player, and now as manager.

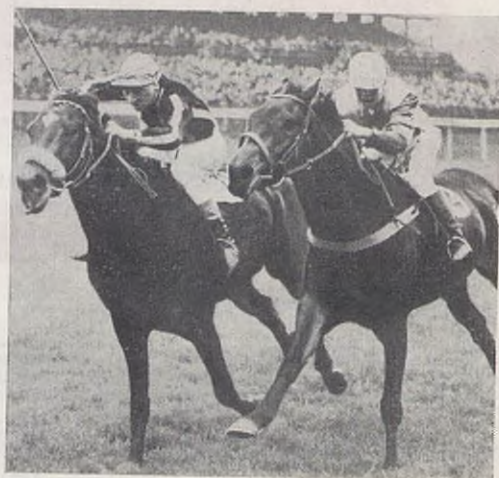
DRYBROUGH

EVERY TIME A WINNER

DRYBROUGH



**You get
an expert
view
of sport
in the**



**SCOTTISH
DAILY
MAIL**