

OFFICIAL PROGRAMME

# RANGERS

(THE HOLDERS)

SCOTTISH  
LEAGUE  
CUP FINAL

v.



**CELTIC**

1/-

Kick-off  
3 p.m.

SATURDAY, 24th OCTOBER, 1964  
HAMPDEN PARK • GLASGOW

# Pen-Pictures of the Celtic Players Who



**JOHN FALLON**

**JOHN FALLON**—Goalkeeper—5 ft., 11 in., 12 st. 3 lb. His consistency, courage and lightning reflexes won him the first team place on getting his chance when Frank Haffey dropped out through injury. Holds a telling understanding with Ian Young and Tommy Gemmell. He has been at Parkhead since 1958, arriving there from Fauldhouse United. He has distinguished himself time and again this season, and draws inspiration from an important occasion, growing in stature rather than being affected by "atmosphere."



**BOBBY MURDOCH**



**IAN YOUNG**

**IAN YOUNG**—Right-back—5 ft. 10 in., 11 st. 3 lb. Was discovered with Neilston Juniors and taken to Parkhead in 1961. He was quick to take his first team chance, and has held the position by his resourceful displays. His long, accurate kicking from deep in defence can start an attack, for rarely does he fail to find a forward colleague positioned to go on. He is having what must surely be his best season.

**TOMMY GEMMELL**—Left-back—5 ft. 11 in., 10 st. 9 lb. Can bring confusion to the opposition by carrying the ball far upfield and mixing with his own forwards. From Coltness Juniors in 1961, this determined fellow has fully justified his promotion to the first team. Does not take unnecessary risks, but is not afraid to go ahead on his own and lend weight to a thrust. Took a knock recently, but, a quick healer, was soon back on the job.

**JOHN CLARK**—Right-half—5 ft. 7½ in., 11 st. Has made the position his own by his zest, driving power and precision in the pass. Arrived at Parkhead from Larkhall Thistle six years ago. A sound tackling, energetic middleman who goes up as an auxiliary forward once he has initiated a thrust. Also carries an accurate shot with either foot. Generates terrific aggression, yet can reveal a delicate touch and fluency. A player you always want to have on your side.

**JOHN CUSHLEY**—Centre-half—5 ft. 11 in., 12 st. Lucky are Celtic in having so efficient a deputy for Billy McNeill. Signed from Our Lady's High School four years ago, he has shown commendable patience in the knowledge that he would get his first team chance when McNeill was unavailable. He has proved himself one of the soundest pivots in the country. His command in the air, and quickness to the challenge could prove an important factor in this final.

**JAMES KENNEDY**—Left-half—5 ft. 10 in., 11 st. 3 lb. Arrived at Parkhead from Duntocher Hibs in 1955 as a left-back, and on taking over the berth from Neil Mochan, now back with Celtic as assistant-trainer-



**JIM KENNEDY**  
Celtic's Captain

coach, quickly gained the position as his own. He then moved into the half-back line and has remained there. A fast-moving middleman, alert to any danger and clever in sealing a defensive loophole. Is Celtic's captain while Billy McNeill is off—and Scotland's left back against Wales at Cardiff. Also played against Finland in the World Cup qualifying test.

**JIM JOHNSTONE**—Outside-right—5 ft. 4 in., 9 st. 8 lb. Showed in the International against Wales in Cardiff that he has the flair for the big time. Can bring despair to a defence with his pace, feinting and trickery. This little bundle of tricks has struck his true form this season. Was at his brightest recently when Celtic beat Rangers 3-1 in the Parkhead League Championship match. Was found with Blantyre Celtic in 1961, and became a firm favourite at Parkhead. A taker as well as a maker of goals.

**BOBBY MURDOCH**—Inside-right—5 ft. 9 in., 11 st. One of the most promising inside-forwards to hit the scene. Doesn't dissipate many chances. Received a leg injury against Kilmarnock at Rugby Park that threatened to put him on the sidelines for several weeks, but made a quicker recovery than was expected. He has gradually brought himself back into form at the right time. Knows the thrill of scoring against Rangers.

**STEVE CHALMERS**—Centre-forward—5 ft. 9 in., 10 st. 12 lb. There is no doubt the Selectors picked wisely when they brought this opportunist into Scotland's International side. He immediately proved the wisdom of their move by his display against Wales at Ninian Park. Came to Celtic from Ashfield in 1959 as an inside-forward, but appeared in the Parkhead line-up in more than one position. Is one of the game's most prolific scorers.

# Aim to Take the Trophy from Rangers



**JIMMY JOHNSTONE**

**CHARLES GALLAGHER**—*Inside-left*—5 ft. 8 in., 10 st. 10 lb. After being in and out of the first team he has won himself a permanent berth. A deep-thinking, astute inside-forward, sure in the pass and baffling in the dribble with a swerve that can hoodwink the most wary. Is quick on the draw. Arrived at Celtic Park from Yoker Athletic in 1958. Takes the penalty kicks.

**JOHN DIVERS**—*Inside-left*—5 ft. 10 ins., 10 st. 7 lbs. Scored two well-taken goals with the head against St. Mirren last Saturday. Son of a noted inside-forward,



**STEVE CHALMERS**

he has carried on the family tradition in a way that has earned the plaudits of the Parkhead followers. He was with Renfrew Juniors when invited to become a Celt in 1957. He didn't hesitate, and was soon being schooled to the Celtic style. Uses the ball intelligently, and carries a vital shot. As has been said, he can also go in and position himself for a goal-taking header.

**JOHN HUGHES**—*Outside-left*—6 ft. 2 in., 12 st. 4 lb. This young winger was signed from Shotts Bon Accord in 1959. He first gained representative honours when he led the Scottish League attack against the League of Ireland at Dalymount and scored Scotland's only goal. Has played many splendid games and netted many a spectacular goal.



**CELTIC MANAGER**

**JAMES McGRORY**

who was one of the most dynamic centre-forwards in Britain when a Celtic player

**BOBBY LENNOX**—*Outside-left*—5 ft. 6 in., 10 st. 6 lb. Was discovered when an inside-forward with Ardeer Recreation, but it is clear his true position is on the extreme wing. His pace in the take-off over the first ten yards can leave a back trailing at his heels. Not only so, but he carries a lethal shot either from a standing position, or on the run.

I WANT A TRANSFER  
I WANT MORE MONEY  
I WANT A STAND TICKET  
I WANT TO KNOW WHY I WAS DROPPED  
I WANT TO SEE THE MANAGER

MANAGER  
F. C.

"AND I WANT A ROCKY"

WHEN THINGS GO WRONG  
Smoke a

**ROCKY**  
4/2 for 20

Rocky Mount  
ULTRA TOPPED  
Cigarettes

# Introducing the Ibrox Men Who Are



**BILLY RITCHIE**

**BILLY RITCHIE**—Goalkeeper—5 ft. 11 in., 13 st. Was signed from Bathgate Thistle ten years ago. Was out of the Rangers first team recently, when Norrie Martin took over, but is back again. He has given wonderful service to Rangers, both home



**RONNIE MCKINNON**

and abroad, particularly against the Continentals. He has had many daring and spectacular saves, and has generally excelled against Celtic. He is known as the "Quiet Man," and the undemonstrative Newton-grange man accepts defeat with as much grace as he does victory.

**DAVID PROVAN**—Right-back—6 ft. 2 in., 11 st. Born Falkirk. When brought into the first team on Eric Caldwell's calamitous injury he set about making the position his own—and succeeded. At no time has he faltered in the task set him. Is not afraid to advance upfield and either strengthen his links with his colleague directly in front or go momentarily into attack. He actually went to Ibrox as a centre-half from Bonnyvale Star in 1958. He played in the Falkirk High School team before going to Bonnyvale. His first major "cap" was against Ireland at Windsor Park last year.

**ERIC CALDWELL**—Left-back—5 ft. 8 in., 10 st. 5 lbs. Rangers longest serving player, having joined the club in July 1952. The Cumnock-born back met with a calamitous double leg break in last year's Wembley International, and it looked as though his career in Rangers first team was threatened. In fact, he made only fleeting appearances in it as he fought to make a full recovery. Came in against Hearts, at Tynecastle, last Saturday. He gave a sound exhibition, and here he is again in his romantic come-back. Before his injury, he was not only Scotland's automatic choice for left-back, but also captain of the team.

**JOHN GREIG**—Right-half—5 ft. 11 in., 10 st. 8 lb. Born Edinburgh. Was booked from Whitburn Juniors in 1958 as an inside-forward, but he rose to great heights of defensive and constructive play. He has now settled into the half-back line. Has a deadly shot. At 21, is quickly establishing himself as one of the most courageous and dependable middlemen in football. Travels daily by train from Edinburgh to Ibrox. Has grown six inches since becoming a



**RALPH BRAND**

Ranger. As a schoolboy supported Hearts, but is now a confessed "Rangers daft" man. Is now accepted as Scotland's International right-half.

**RONNIE MCKINNON**—Centre-half—5 ft. 11 in., 11 st. Born Glasgow. Was signed by Manager Scot Symon in 1958 from Dunipace Juniors as a left-half, but it was obvious his most effective position was discovered when moved to centre-half. Has given more than one commanding display this season. Most centre-forwards agree he is among the most tenacious and resolute pivots in the country, and is improving with each season's work. He builds as well as destroys. During the war, he was evacuated from Glasgow with his twin brother, Donnie, to Stornoway. Isn't known as a scorer, but headed a fateful one to give Rangers another chance against Red Star (Belgrade) whom Rangers meet in the European Cup first round play-off at Highbury next month.

**WILSON WOOD**—Left-half—5 ft. 7 in., 10 st. 6 lbs. The Whitburn-born left-half returned to Scotland from Newcastle United and joined up at Ibrox four years ago. He was brought into the first team against Everton in last season's British League "decider" at Goodison, and won the admiration of all by his courage, judgment in the tackle and willingness to advance and lend weight to the attack. He gave another good display against Hearts last Saturday, and is clearly a young man with a future. Never becomes ruffled no matter how tense a game may be, and seldom lets the ball leave him without sure intent.

**JIM FORREST**—Centre-forward or winger—5 ft. 8½ in., 10 st. 7 lb. Born Glasgow. Arrived at Ibrox in September, 1961. On getting his chance in the first team, the teenager grabbed it, but he is not at the moment, the dynamic centre of a season ago. Nevertheless, he has emphasised his value in the way he can snap a chance and there is no doubt he has tremendous potential. He enjoys the challenge of Continental opposition, and was highly praised by Real Madrid after Rangers European Cup games with the Spaniards last season.

**RALPH BRAND**—Inside-left or right—5 ft. 7 in., 10 st. Born Edinburgh. Joined Rangers from Carricknowe School in 1952. He appeared in several positions before taking over the inside-left berth. Has done well in Old Firm matches. Scored a spectacular goal against Dundee in last season's Scottish Cup final. Is married with three children. He has won almost every honour there is to be won, and has eight full "caps."

## How They Got Here

### RANGERS Sectional

ABERDEEN (Home) .....	4-0
" (Away) .....	4-3
ST. MIRREN (Home) .....	6-2
" (Away) .....	0-0
ST. JOHNSTONE (Home) .....	3-1
" (Away) .....	9-1
	<hr/> 26-7

### Quarter-final

DUNFERMLINE (Away) .....	3-0
" (Home) .....	2-2

### Semi-Final

DUNDEE UNITED .....	2-1
---------------------	-----

(After extra time)  
At Hampden Park

### CELTIC Sectional

PARTICK THISTLE (Home) .....	0-0
" (Away) .....	5-1
HEARTS (Away) .....	3-0
" (Home) .....	6-1
KILMARNOCK (Home) .....	4-1
" (Away) .....	0-2
	<hr/> 18-5

### Quarter-Final

EAST FIFE (Away) .....	0-2
" (Home) .....	6-0

### Semi-Final

MORTON .....	2-0
--------------	-----

At Ibrox Park

# Bidding to Retain the League Cup



**JIMMY MILLAR**

**JIMMY MILLAR**—Inside-right or centre-forward—5 ft. 7 in., 11 st. 12 lb. Born Edinburgh. When there's a difficult job to be done—in attack or half-back—just call on this gallant, powerful and skilful fellow. Married with a boy and a girl, he is truly a family man, but finds little leisure time. He was transferred from Dunfermline in 1955 for £5,000, and has shown himself one of the wisest buys Rangers ever made. No cause is ever lost so long as he is around. Misses few chances with his head.



**JIM BAXTER**

**JIM BAXTER**—Left-half or inside-left—5 ft. 10 in., 10 st. Born Hill O'Beath. He is accepted as virtually automatic choice as Scotland's left-half. His innate skill has become known throughout the football world. A cool, cunning tactician who also possesses a telling shot. Was transferred from Raith Rovers to Rangers in June, 1960, and straightaway settled into the side, disclosing his remarkable gifts in ball control and reading of a situation. Undoubtedly one of the finest manipulators in Britain, and as such was chosen in the Rest of the World side. His influence in the Ibrox side is truly remarkable, his colleagues repeatedly turning to him for guidance.



**SCOT SYMON**

former half-back, who gave Rangers yeoman service as a player. 'rd now as manager

**WILLIAM JOHNSTON**—Outside-left—5 ft. 7 ins., 10 st. This Glasgow-born youngster was an inside-forward with Lochore Welfare when taken along to Ibrox. It was soon evident they had unearthed another lad of tremendous promise. He quickly settled into the outside-left wing berth, proving himself capable of snatching a goal with a confidence and alertness that made him an obvious choice for the berth when Davie Wilson went off. He responds well to Jim Baxter's coaxing and Slim Jim's hairsbreadth accuracy in the pass between the opposing half-back and back. His duels with Ian Young in today's final could become one of the most attractive features.

## Previous Cup Winners

### SOUTHERN LEAGUE CUP

- 1940-41 Rangers 4, Hearts 2 (after draw 1-1)
- 1941-42 Rangers 1, Morton 0
- 1942-43 Rangers 1 goal 11 corners, Falkirk 1 goal 3 corners
- 1943-44 Hibernian 6 corners, Rangers 5 corners
- 1944-45 Rangers 2, Motherwell 1
- 1945-46 Aberdeen 3, Rangers 2

### SCOTTISH LEAGUE CUP

- 1946-47 Rangers 4, Aberdeen 0
- 1947-48 East Fife 4, Falkirk 1 (after a draw 1-1, after extra time)
- 1948-49 Rangers 2, Raith Rovers 0
- 1949-50 East Fife 3, Dunfermline 0
- 1950-51 Motherwell 3, Hibernian 0
- 1951-52 Dundee 3, Rangers 2
- 1952-53 Dundee 2, Kilmarnock 0
- 1953-54 East Fife 3, Partick Thistle 2
- 1954-55 Hearts 4, Motherwell 2
- 1955-56 Aberdeen 2, St. Mirren 1
- 1956-57 Celtic 3, Partick Thistle 0 (after a draw 0-0, after extra time)
- 1957-58 Celtic 7, Rangers 1
- 1958-59 Hearts 5, Partick Thistle 1
- 195-60 Hearts 2, Third Lanark 1
- 1960-61 Rangers 2, Kilmarnock 0
- 1961-62 Rangers 3, Hearts 1 (after a draw 1-1)
- 1962-63 Hearts 1, Kilmarnock 0
- 1963-64 Rangers 5, Morton 0



**DID  
YOU  
KNOW?**

The T pattern football was first produced in 1921. Previous to that date footballs were made in a variety of patterns but all suffered from the fault that they did not remain truly spherical for very long.

Wm. Thomlinson Ltd., the discoverers of the T pattern football, have had their footballs used in more international matches than any other manufacturer. Thomlinson T pattern footballs are available at all good sports shops in a variety of models and at prices to suit every pocket.

Sole Manufacturer:

**WM. THOMLINSON LTD.**  
450 DUMBARTON ROAD, GLASGOW, W.1

# Here are the Teams for To-day's Scottish League Cup Final at Hampden

CELTIC CHAIRMAN \*



ROBERT KELLY

The ball used in this match is the Thomlinson improved "T" Ball. It is supplied by The Sportsman's Emporium, 103 St. Vincent Street, Glasgow, and manufactured by Wm. Thomlinson Ltd., Glasgow.

## HALF-TIME SCOREBOARD

A	Airdrie v Dundee Utd	.....
B	Clyde v St Johnstone	.....
C	Dundee v Hearts	.....
D	Dunfermline v Aberdeen	.....
E	Falkirk v Third Lanark	.....
F	Hibernian v Morton	.....
G	Partick Th v Motherwell	.....
H	Alloa v. Stranraer	.....
I	Arbroath v E.S. Clydebank	.....
J	Dumbarton v. Forfar Ath.	.....
K	East Fife v. Albion Rovers	.....
L	Hamilton v. Raith Rovers	.....
M	Montrose v. Cowdenbeath	.....
N	Q. of S. v. Stenhousemuir	.....
O	Stirling Alb. v. Brechin City	.....



## Official Jewellers to:-

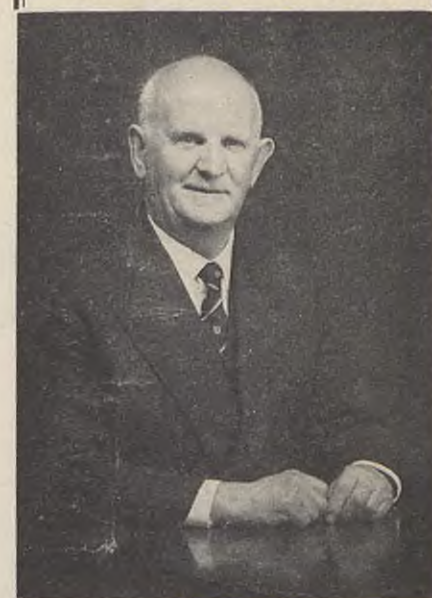
Scottish Football League  
Scottish National Amateur Athletic Assoc.  
Cowal Highland Gathering  
National Cross-Country Union of Scotland  
Estimates and Illustrations prepared free

## T. S. CUTHBERT

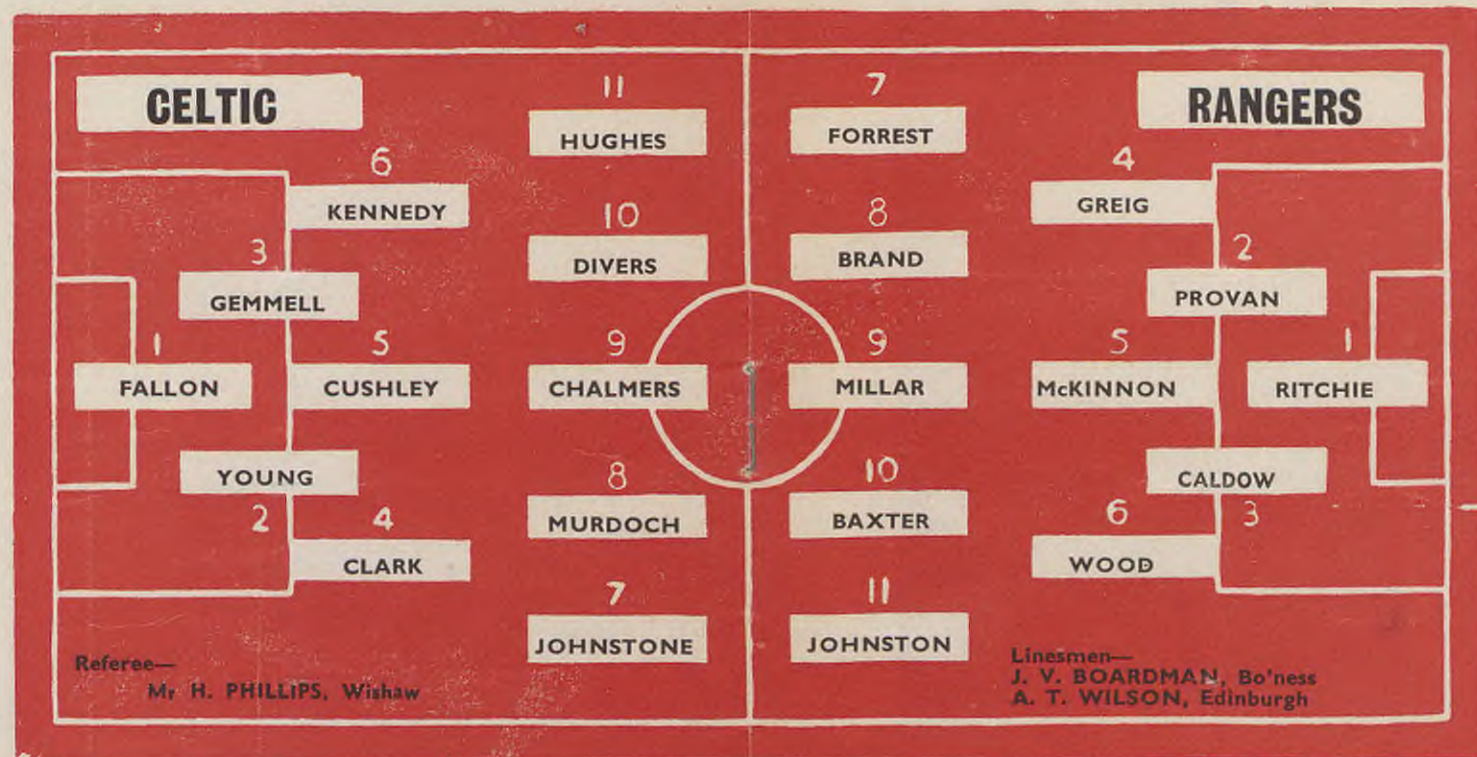
(STANTON CROSTHWAITES)  
48 BUCHANAN STREET 7 PRINCES SQUARE  
GLASGOW, C.1 Tel.: CEN 3717



RANGERS CHAIRMAN



JOHN LAWRENCE



## EXTRA TIME IF NECESSARY

If the clubs finish level today at the end of 90 minutes, AN EXTRA HALF-HOUR WILL BE PLAYED. If they are still level after the extra time, the replay will take place on Wednesday evening, details of which will be given through the medium of the Press

## TODAY'S MUSIC

You will be entertained today before the kick-off and again at the interval by the 6th/7th Battalion the Cameronians (Scottish Rifles). By kind permission of Commanding Officer, Lieut.-Col. C. E. Michie, T.D.

## THE FINAL SUM-UP

Here is a summation of wins and losses between Celtic and Rangers in the major competitions:

	Rangers wins	Celtic wins
The League	58	35
Scottish Cup	9	11
Glasgow Cup	30	20
Glasgow Charity Cup	20	11
Regional League	1	0
Southern League	7	3
Southern League Cup	4	0
Scottish League Cup	8	7
Victory Cup	1	0
Summer Cup	2	0
<b>Total</b>	<b>140</b>	<b>87</b>

AFTER THE GAME...

THE NAME'S THE SAME \*



\* SAY

DRYBROUGH

a truly Scottish Beer





...That's the Scotsport film unit. They cover all the major sporting events to bring you the best in Scottish and world sport. Filmed reports, results, comments and interviews —you can see them all in Scotsport, Wednesdays and Saturdays on

**SCOTTISH**   
**TELEVISION**