



Scottish Premier League

CELTIC

versus

HEARTS

**CELTIC PARK
SATURDAY,
19th AUGUST, 1978
Kick-off 3.00 p.m.**

PROGRAMME

10p

Spot the successful team.



More gifts for less smoking.

KT086

LOW TO MIDDLE TAR (Kensitas Club Mild) MIDDLE TAR (all other Kensitas brands) As defined by H.M. Government.

H.M. Government Health Departments' WARNING:
CIGARETTES CAN SERIOUSLY DAMAGE YOUR HEALTH

Liverpool— that's the standard for Celts



IN a number of ways I'm delighted with the start we've made to the 1978-79 season in the matches with Morton, Liverpool and Dundee.

Against the European champions and the Dens Parkers at Parkhead we probably just didn't finish off things as quickly as one would have liked.

The encouraging thing was that we made goal chances and the players went about their work with great enthusiasm and skill.

The Liverpool visit was a wonderful affair . . . a night of nostalgia, great excitement and a lot of fine football. The play matched the occasion . . . Jock Stein's testimonial. And if I thought we might have had a better result maybe I'll get a few people to agree with me!

An important factor from the match . . . Liverpool's performance let everyone at Celtic Park see the standard of play on which we must set our sights.

The League Cup tie with Dundee was not an easy one. The opposition was bent on frustrating Celts but the team remained patient, kept pushing on and in the end they were rewarded with a 3-1 victory to carry forward to the second leg at Dens Park next week.

Jim Lumsden turned out with the reserves this afternoon . . . to do the job that he came to Parkhead to accomplish, practical player-coaching.

He's keen to get involved in his task and I am certain he'll do a good job in the furtherance of my own ambition . . . to develop our own players. It'll take a little time, but it is a Celtic tradition I want to see restored.

Danny McGrain? I know there was expectation that he should immediately and automatically follow last week's appearance with further games in the reserve side.

This is a situation that has to be played by ear at the moment, but fans can be assured that Danny will have every opportunity to regain his place at the top in football.

BILLY McNEILL

CELTIC



FOUNDED 1888

Directors:

Desmond White, C.A.
(Chairman)

Thomas L. Devlin

James M. Farrell,
M.A., LL.B.

Kevin Kelly

Manager:

Billy McNeill

Address:

Celtic Park,
95 Kerrydale Street,
Glasgow G40 3RE

HONOURS:

League Champions (30 times)

1893, 1894, 1896,
1898, 1905, 1906,
1907, 1908, 1909,
1910, 1914, 1915,
1916, 1917, 1919,
1922, 1926, 1936,
1938, 1954, 1966,
1967, 1968, 1969,
1970, 1971, 1972,
1973, 1974, 1977.

Cup Winners (25 times)

1892, 1899, 1900,
1904, 1907, 1908,
1911, 1912, 1914,
1923, 1925, 1927,
1931, 1933, 1937,
1951, 1954, 1965,
1967, 1969, 1971,
1972, 1974, 1975,
1977.

League Cup Winners (8 times)

1957, 1958, 1966,
1967, 1968, 1969,
1970, 1975.

Empire Exhibition Cup 1938

Coronation Cup 1953

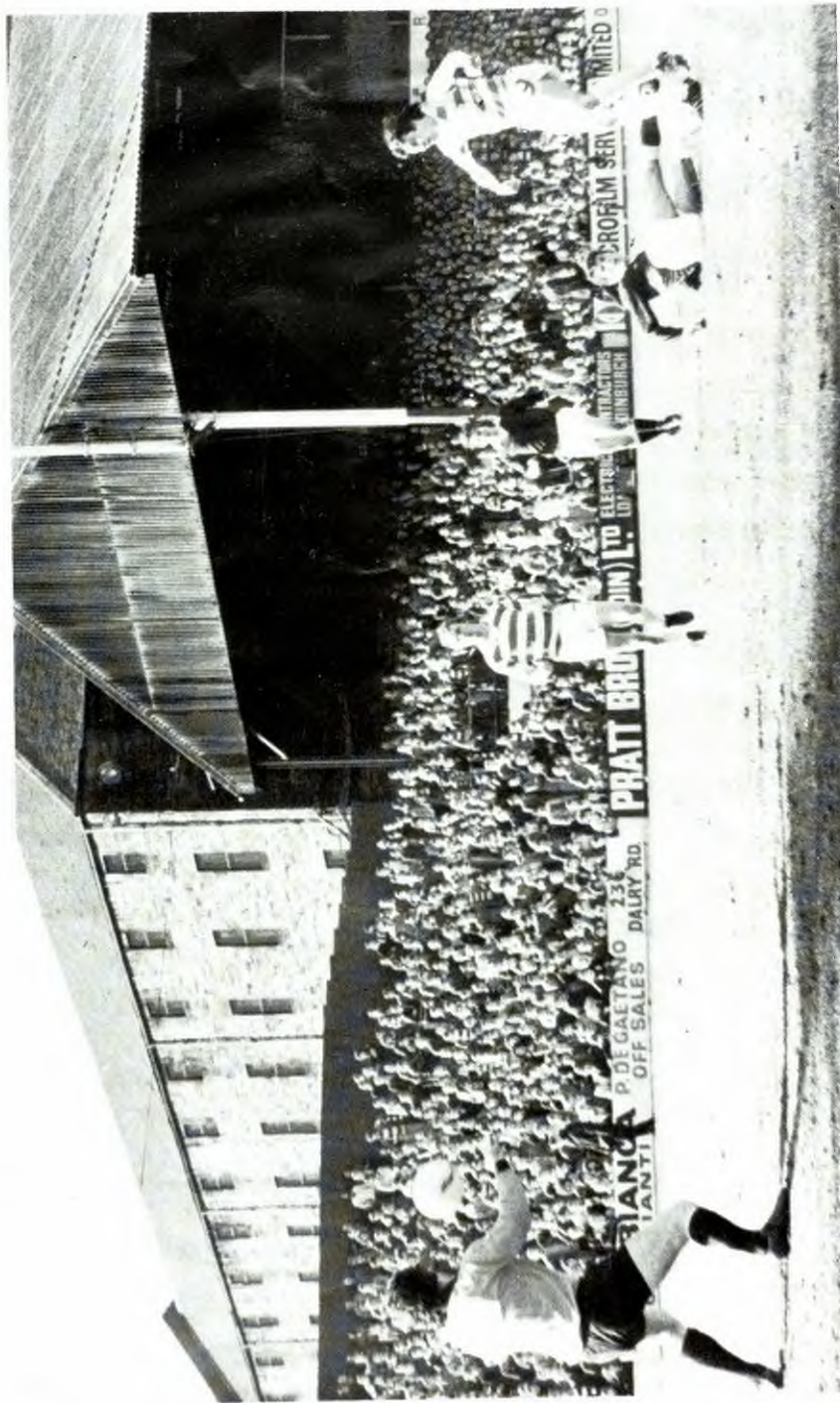
European Cup 1967



**Scotland's No.1
volume dealer**

**DALMARNOCK ROAD,
Tel:041-647 0511**

**OPEN ALL DAY SUNDAY
Only 2 minutes from Parkhead**



Joe Craig cracks home one of Celtic's goals in the Parkhead club's 3-0 win at Tynecastle on April 2, 1977 — the last Premier League game between the teams.

OUR VISITORS

Hearts rely on men who won them promotion

HEARTS' return to the Premier League scene has been a greatly chastening experience.

Beaten 4-1 at Tynecastle on opening day by Aberdeen (who were quickly into a championship-challenging) stride to be followed by an Anglo-Scottish Cup first leg tie defeat from Partick Thistle at Firhill hasn't exactly heightened their confidence for this afternoon's Premier fixture with Celtic.

Of course the Edinburgh side had had Drew Busby and Gordon Smith under suspension, but after winning pre-season games against West Brom and Middlesbrough there was enthusiasm that a successful transition from First Division to the Top Ten could be achieved all right with the men who won promotion.

There is a long way to go and manager Willie Ormond isn't displaying signs. He's much too experienced a campaigner in the pressures of football.

Nevertheless, he may well have to reshuffle the pack a bit if they leave Parkhead pointless — as Celtic, despite a hard week, are bent on doing.

There is a gap between First Division and Premier League. The pressures are greater in the Top Ten and in its short life it has proved a tight and highly competitive competition which makes the handicap of an indifferent start hard to overcome.

Manager Ormond doesn't have numerous options open to him, but the "lessons" of their Aberdeen and Partick Thistle matches will assuredly have awakened Hearts to the strengths of the new scene in which they are operating.

The absence of Busby and Smith obviously cut Hearts player strength.

"And like the rest of the clubs we are finding it a wee bit difficult in getting players. The men we would want are either unavailable or the price is prohibitive", says manager Ormond.

However, Hearts will continue the search to boost the staff for the long and arduous Premier campaign.

He didn't anticipate adding to the squad before this afternoon's game at Celtic Park. The men who won promotion are still being given the chance to prove that they can withstand the heat of the Top Ten.

"A trip to Celtic Park is always looked forward to with some eagerness. There's always a great atmosphere and I know my players will respond to it and give a good account of themselves," said manager Ormond.

He accepts that it will be a difficult match, for Hearts, but with a midfield of Eamonn Bannon, Cammy Fraser and Graham Shaw the Tynecastle men have a good base from which to get settled to an effective play pattern.



Here is the Hearts staff for the 1978-79 season: Back row: (left to right) David Park, Gibson, McCafferty, Brough, Dunlop, Stanwick, Grant, O'Sullivan, Fraser, Middle Row — Coach Bert Paton, Smith, Busby, Roger, Liddell, Brown, Stewart, McLeod, Black, Bannon, Lennie, Front Row — Physiotherapist Andy Stevenson, Scott, Prentice, Shaw, Jeffries, Laurie Tierney, Robertson, Kidd, Donald Park, Manager Willie Ormond.

MATCH TEAMS

CELTIC (from)

PETER LATCHFORD
 JOE FILIPPI
 ALAN SNEDDON
 ANDY LYNCH
 ROY AITKEN
 RODDIE McDONALD
 JO EDVALDSSON
 JOHNNY DOYLE ✓✓✓
 ALFIE CONN ✓✓
 RONNIE GLAVIN ✓✓
 TOM McADAM ✓✓
 TOMMY BURNS ✓
 PAUL WILSON ✓
 JIM CASEY



Mr R. B.
 (L
 Mr T.
 (Eas
 Mr H
 (



Spectators
 care — par
 ground

HALF-TIME S

| | | | | | |
|----------|--------------------------|--------|----------|--------------------------|--------|
| A | ABERDEEN MORTON | 3 1 | E | DUMBARTON STIRLING AL | |
| B | HIBERNIAN RANGERS | 0 0 | F | DUNDEE ARBROATH | |
| C | PARTICK TH DUNDEE UTD | 1 1 | G | HAMILTON ST JOHNSTONE | |
| D | ST MIRREN MOTHERWELL | 0 1 | H | KILMARNOCK AIRDRIE | 2 0 |

BELL'S SCOTCH

AND OFFICIALS

Referee:
 VALENTINE
 (Dundee)
 Linesmen:
 T. GILBERT
 (St. Kilbride).
 J. DEMPSEY
 (Elskine).



are requested to take
 particularly leaving the
 after the match.

HEARTS (from)

RAY DUNLOP
 WALTER KIDD
 JIM JEFFRIES
 FRANK LIDDELL
 DAVE McNICHOLL
 CAMMY FRASER
 DONALD PARK
 EAMONN BANNON
 WILLIE GIBSON
 GRAHAM SHAW
 MALCOLM ROBERTSON
 RAB PRENTICE
 LAWRIE TIERNEY



SCOREBOARD

| | | | | | |
|----------|-----------------------|--------|----------|---------------------------|--------|
| I | MONTROSE CLYDE | | M | CHELSEA EVERTON | |
| J | Q O S AYR UTD | | N | LIVERPOOL QPR | |
| K | RAITH ROVERS CLYDE | | O | NORWICH SOUTHAMPTON | 3 1 |
| L | ARSENAL LEEDS UTD | 1 2 | P | NOTTS FOREST TOTTENHAM | 1 1 |

H WHISKY **BELL'S**

FOLLOW THE SCORE!

At Bank of Scotland there's a range of services to meet personal needs making money management straightforward. See the Manager at one of our 600 branches and find out how we can help.



BANK OF SCOTLAND

not just any bank.

ALL THE ACTION IN COLOUR

Daily 
Record

SUNDAY
mail

SIDELINES

PAT'S NOW A DON

Pat Stanton is the latest ex-Celt to go into football management. Just 10 days after retiring as a player he became assistant manager to Alex Ferguson at Aberdeen this week.

What with Tommy Gemmell and Willie Wallace at Dundee, Benny Rooney and Mike Jackson (Morton), Bertie Auld (Partick Thistle) and of course Billy McNeill and John Clark at Parkhead the managerial influence of ex-Celts in Scotland is most pronounced.

CLOUGH ACCLAIMING JOCK

Among the many tributes paid to Jock Stein this week was one from manager Brian Clough of Notts Forest. In a telegram read at the testimonial dinner in the City Chambers, the boss of the English League champions described Jock as "The Manager of the Century".

FOCUS ON KENNY

Kenny Dalglish is the subject of the Focus on the Facts article in next week's Celtic View. Wednesday's issue brings the first instalment of his career with Celtic, a football story that is continuing at the highest level with European champions Liverpool.

QUIZ TIME

1. Name the Argentinians who have joined Tottenham.
2. World Cup star Mario Kempes (Argentine) plays for which Spanish club?
3. Which two clubs did Billy McNeill manage before Celtic?
4. What was the attendance at the Jock Stein Testimonial match with Liverpool?

1. Ardiès and Villa.
2. Valencia.
3. Clyde and Aberdeen.
4. 62,600.

ANSWERS



Let's face it . . .

Hiring a coach is the best way for your Supporters' Club to follow your team around. Prices are moderate. Ask for full particulars from the Private Hire Department of your local bus office—the address is in the telephone directory

**SCOTTISH
BUS
GROUP**

W. Alexander & Sons
(Midland) Ltd.

Eastern Scottish
(Scottish Omnibuses Ltd.)

Western S.M.T. Co. Ltd.

Central S.M.T. Co. Ltd.



This piece of action was shot at the last meeting between Celtic and Hearts — the League Cup semi-final at Hampden on March 1, 1978. Celtic won 2—0.